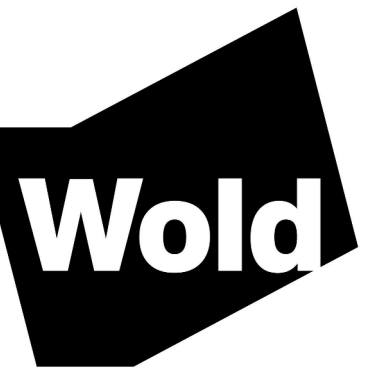


**CRETIN-DERHAM
HALL STEM
ADDITION**

550 South Albert Street
Saint Paul, MN 55116

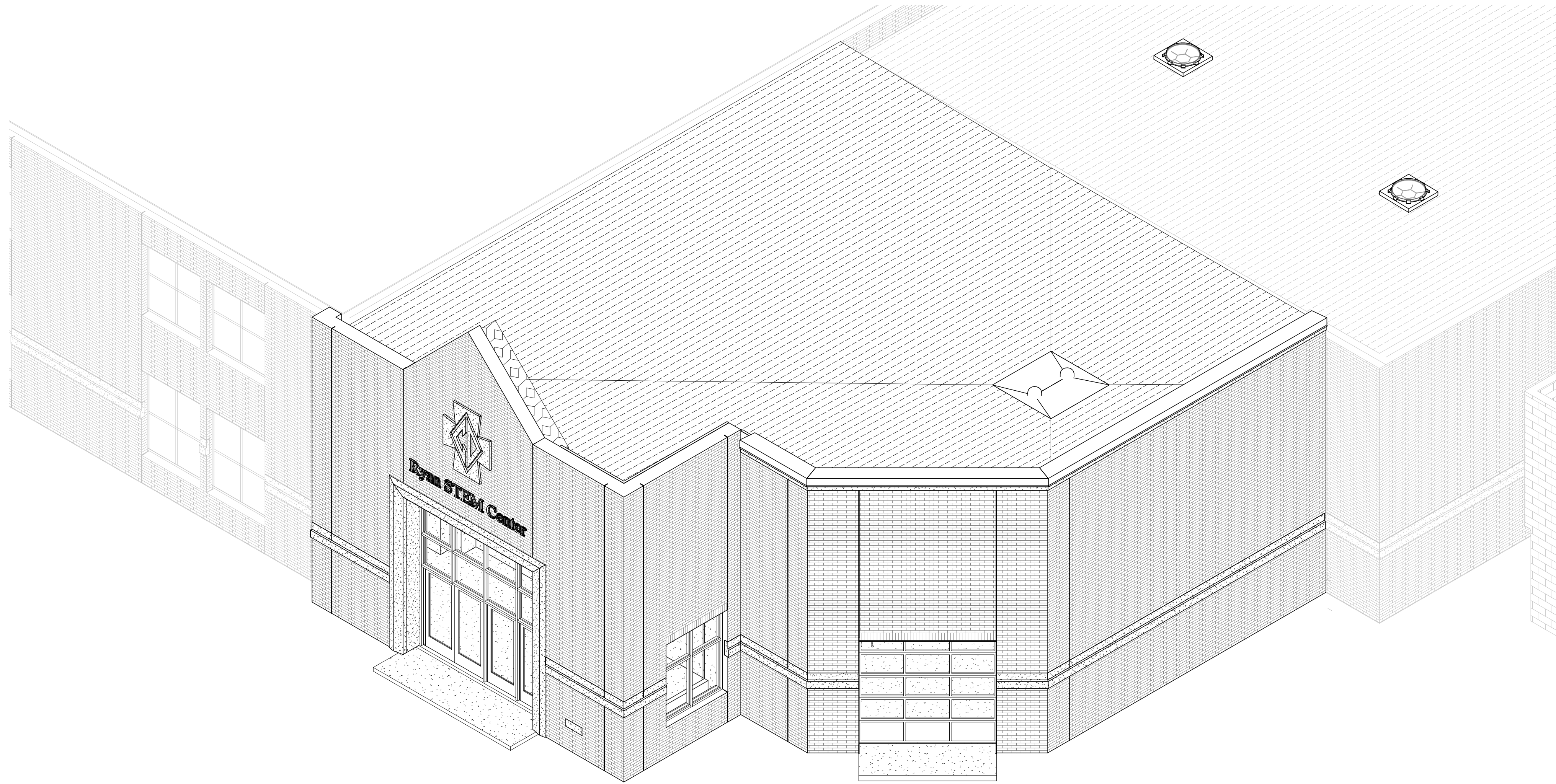
CRETIN-DERHAM HALL
550 South Albert Street
Saint Paul, MN 55116



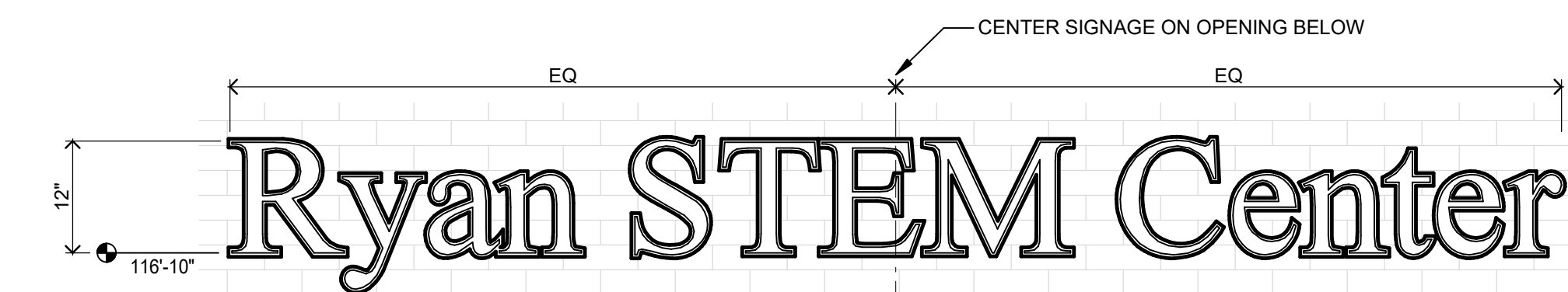
**WOLD ARCHITECTS
AND ENGINEERS**
332 Minnesota Street, Suite W2000
Saint Paul, MN 55101

woldae.com | 651 227 7773

MN



MATERIALS KEY	
KEY	MATERIAL
03.05	PRECAST SHAPES
04.01	BRICK 1
04.99	BRICK EXPANSION JOINT
07.16	SHEET METAL FLASHING AND TRIM
08.04	ANODIZED ALUMINUM DOOR
08.08	ANODIZED ALUMINUM FRAME
10.06	ALUMINUM DIMENSION LETTER SIGNAGE



DIMENSIONAL LETTER SIGNAGE CONSTRUCTION:

FACE LAYER

- 1/4" THICK
- CLEAR ACRYLIC FIRST LAYER
- PAINTED BRUSHED ALUMINUM FIRST SURFACE (BLACK)
- PAINT EDGES TO MATCH

BACK LAYER

- 1/4" THICK, CONTOURED
- CLEAR ACRYLIC SECOND LAYER
- PAINTED BRUSHED ALUMINUM FIRST SURFACE (BLACK)
- PAINT EDGES TO MATCH

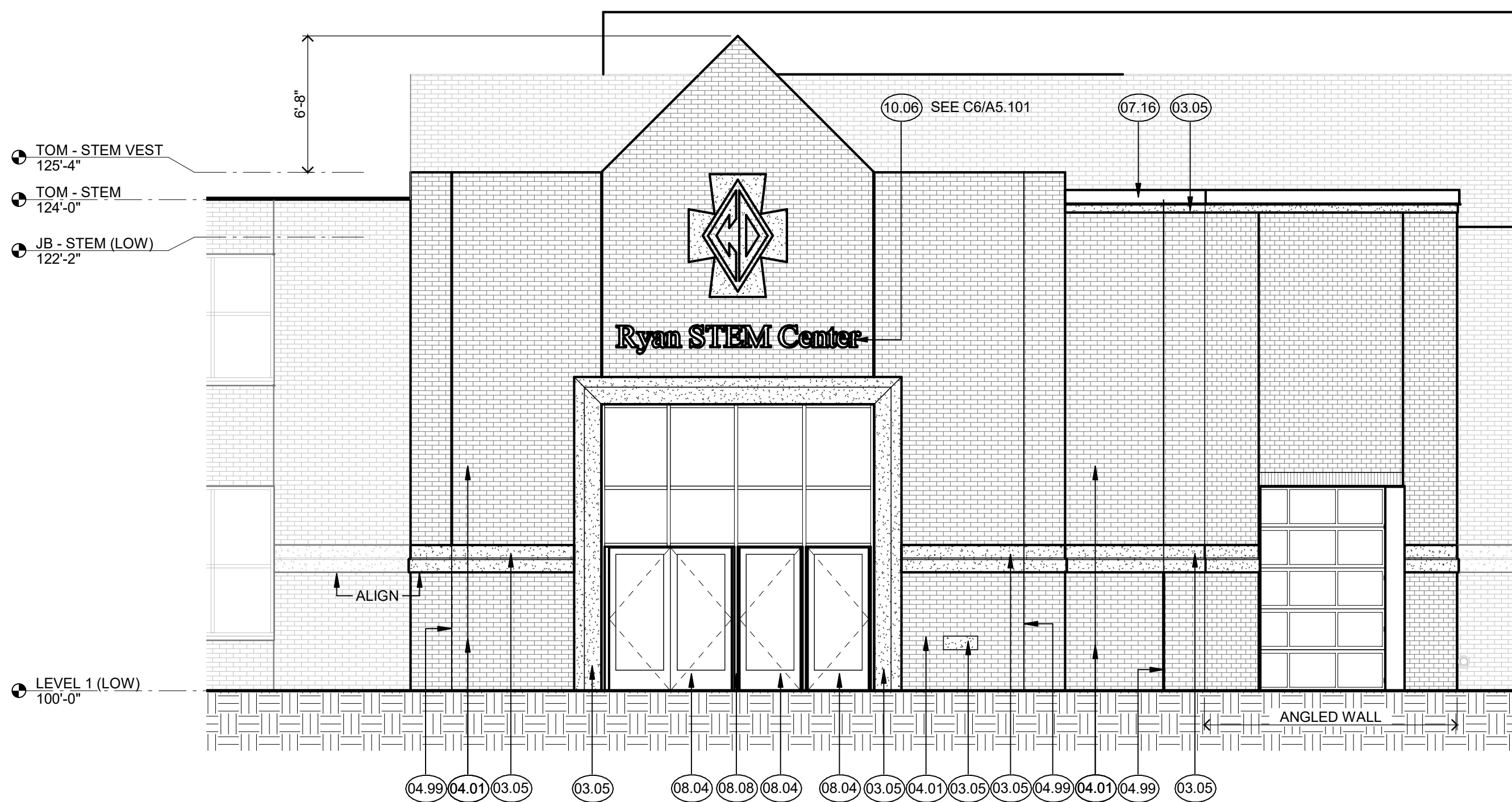
ANCHORING

- 1/2" STANDOFFS
- MOUNT TO WALL USING STUDS INTO SILICONE FILLED HOLES

C1 STEM ADDITION AXONOMETRIC (FOR REFERENCE ONLY)
A5.101

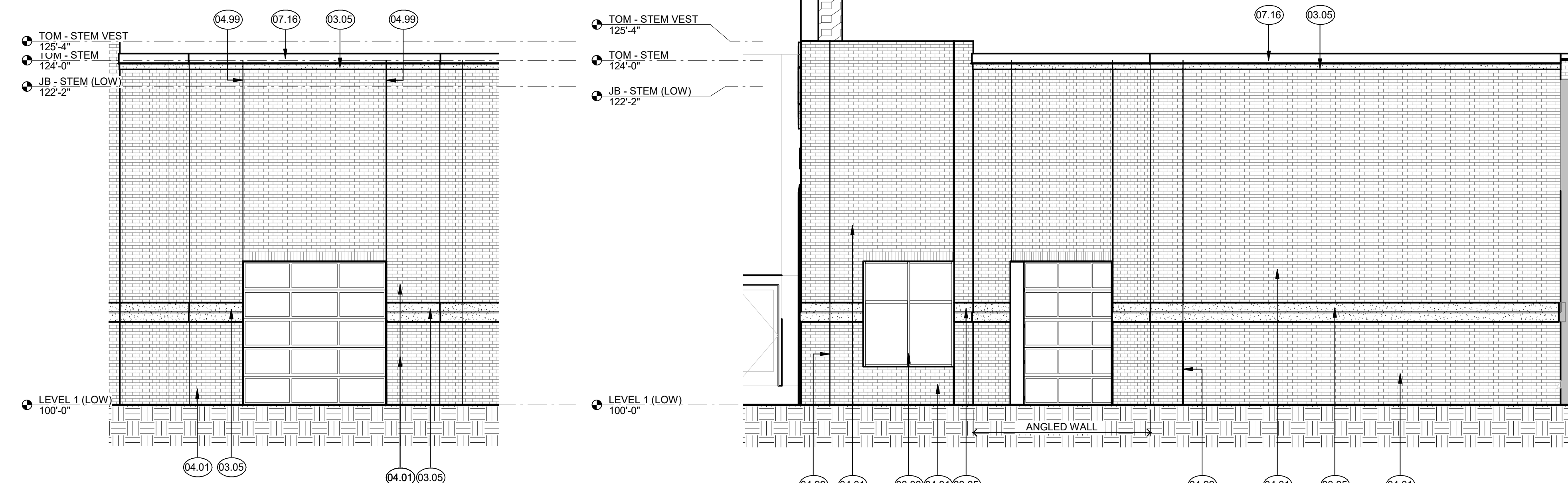
C6 DIMENSIONAL LETTER SIGNAGE AT STEM ENTRY
A5.101 3/4" = 1'-0"

CL.4 CM.2 CM.4 CM.8



F1 SOUTH ELEVATION AT STEM ADDITION
A5.101 3/16" = 1'-0"

C17.2 C16.3 C15.6 C13.9



F4 SOUTHEAST ELEVATION AT STEM ADDITION
A5.101 3/16" = 1'-0"

F6 EAST ELEVATION AT STEM ADDITION
A5.101 3/16" = 1'-0"

I hereby certify that this plan, specification or report was prepared by me or under my direct supervision and that I am a duly Licensed ARCHITECT under the laws of the State of MINNESOTA

Vaughn Dierks
License Number: 26979 Date: 2021.03.12

Description	Revisions	
	Date	Num

Comm: 212017
Date: 2021.03.12
Drawn: KLS
Check: Checker

**EXTERIOR
AXONOMETRIC
AND ELEVATIONS**

Scale: As indicated

**SITE PLAN REVIEW DRAWINGS
NOT FOR CONSTRUCTION**

A5.101