

“AREA C”

Old Dump on Ford Motor Company’s River Parcel

*Amy Hadiaris, P.G.
November 19, 2019*



Minnesota
Pollution
Control
Agency



Main Assembly Building

Paint Building

Wastewater
Treatment Plant

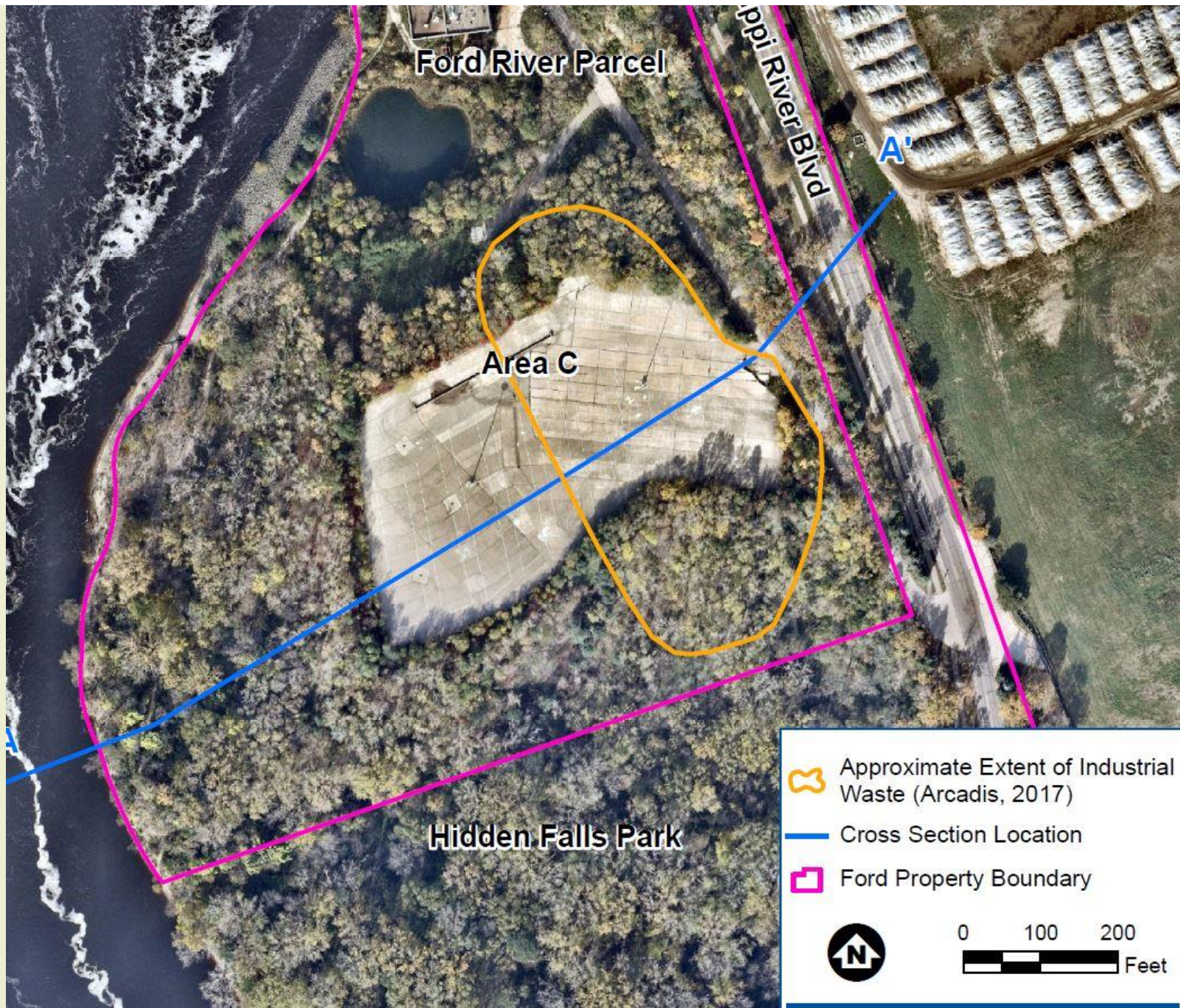
Steam Plant

Warehouse

“AREA C” - OVERVIEW

- Located at base of bluff on the floodplain
- Industrial waste (paint sludge, solvents) disposed from 1940 to 1960s
- Industrial waste layer about 25 feet thick
- Overlain by 40+ feet of fill soil
- Surrounded by large demolition debris
- Covered by concrete parking lot (late 1980s)






Ford River Parcel


Mississippi River Blvd


A'



Area C

Hidden Falls Park

 Approximate Extent of Industrial Waste (Arcadis, 2017)

 Cross Section Location

 Ford Property Boundary

  0 100 200 Feet

INITIAL DISCOVERY

- Anonymous phone call - October 1980:

“During the 1950s near the Ford Plant, waste solvents from the plant’s painting operation were dumped over the steep bluff overlooking the river, and waste in barrels was buried.”



COMPLICATING FACTOR...

Army Corp of Engineers rebuilt Ford Lock & Dam in late 1970s:

- 40+ feet of dredged material placed on top of waste
- Huge concrete blocks around perimeter

These actions makes the industrial waste very difficult to access and remove.



EARLY REGULATORY HISTORY

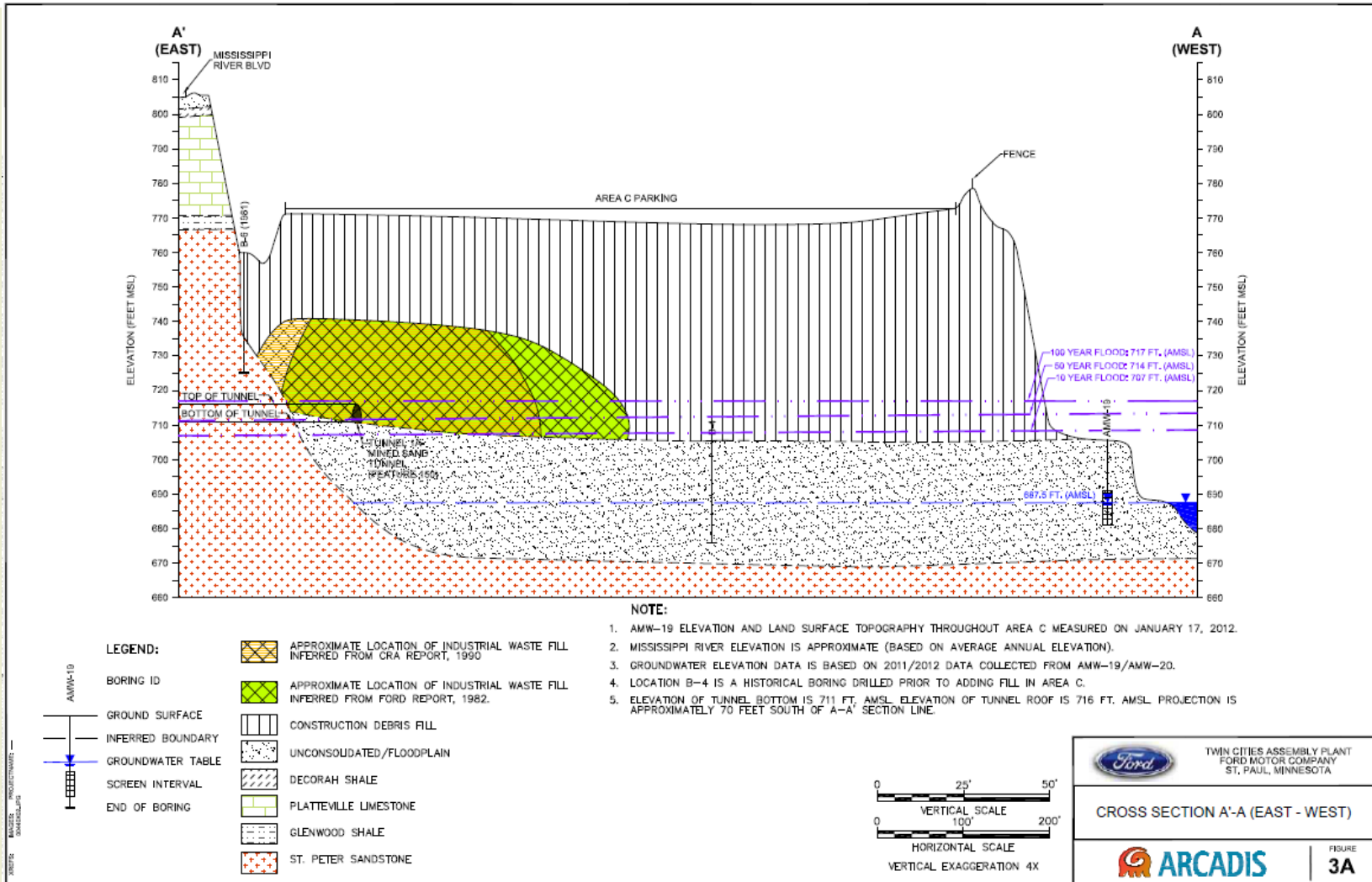
- **1981 to 1990: groundwater monitoring, no significant impact.**
- **1984: Ford site listed on PLP (for Area C and other main-parcel issues)**
- **Limited surface cleanup at Area C**
- **1993: Ford site removed from PLP**

INVESTIGATION AT AREA C

(2015-2016)



CROSS-SECTION OF AREA C



NEXT STEPS

- Community information meeting - Feb 2020
- Additional monitoring wells – Summer 2020
- Continued groundwater monitoring
- Feasibility Study (cleanup alternatives)
- Choose and implement cleanup plan

*MPCA requires that risk to people and the river be managed.
This can be accomplished in different ways.*