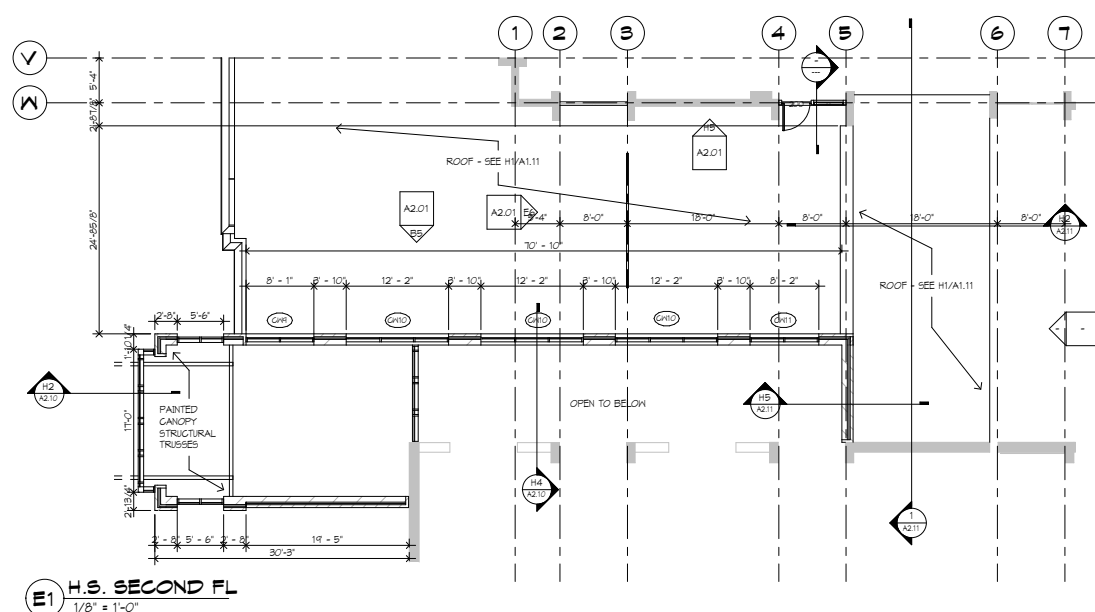


ROOM FINISH SCHEDULE													
ROOM	ROOM NAME	FLOOR	BASE	N HALL - TYP			E HALL			S HALL			REMARKS
				MATL	FIN	FIN	MATL	FIN	MATL	FIN	MATL	FIN	
106	STAFF DEVELOPMENT		EXIST	EXIST	EXIST	EXIST							
108	CONCOURSE		CPT-1	VB	EXIST	PT	EXIST	PT	EXIST	PT	GYP. BD.	PT	
104	MULTI PURPOSE		CPT-1	VB	EXIST	PT	GYP. BD.	PT	EXIST/GYP. BD.	PT/PT	EXIST	PT	
130	VESTIBULE		GT	GT	GBK/GH	PT	GH/EXIST	PT	GBK/GH	PT/PT	GH	PT	
121	OFFICE		CPT-1	VB	GYP. BD.	PT	GYP. BD.	PT	GH/GYP. BD.	PT/PT	GYP. BD.	PT	
121A	WAITING		CPT-1	VB	GH	PT	GH	PT	GH	PT	GH	PT	
121B	OFFICE ASSISTANT		CPT-1	VB	GYP. BD.	PT	GYP. BD.	PT	GYP. BD.	PT	GYP. BD.	PT	
122	ASSISTANT PRINCIPAL		CPT-1	VB	GYP. BD.	PT	EXIST	PT	GH	PT	G.BLK	PT	
123	ASSISTANT PRINCIPAL		CPT-1	VB	GYP. BD.	PT	GYP. BD.	PT	GYP. BD.	PT	G.BLK	PT	
124	PRINCIPAL		CPT-1	VB	GBK	PT	GYP. BD.	PT	GYP. BD.	PT	G.BLK	PT	
124A	PRINCIPAL		CPT-1	VB	GBK	PT	GYP. BD.	PT	GYP. BD.	PT	G.BLK	PT	
124B	PRINCIPAL		CPT-1	VB	GBK	PT	GYP. BD.	PT	GYP. BD.	PT	G.BLK	PT	
126	POLICE LIAISON		CPT-1	VB	GYP. BD.	PT	GYP. BD.	PT	GYP. BD.	PT	GYP. BD.	PT	
127	REGISTRATION		CPT-1	VB	GBK/GYP. BD.	PT	GYP. BD.	PT	GYP. BD.	PT	GYP. BD.	PT	
127A	WAITING		CPT-1	VB	GYP. BD.	PT	GYP. BD.	PT	GYP. BD.	PT	GYP. BD.	PT	
128	WORKROOM		VG	VB	GYP. BD.	PT	GYP. BD./C. BLK	PT/PT	GYP. BD.	PT	GYP. BD.	PT	
129	CONFERENCE		CPT-1	VB	GYP. BD.	PT	G. BLK	PT	G. BLK	PT	GYP. BD.	PT	
130	STAFF TOILET		GT	GT	GYP. BD.	GT/PT	GYP. BD.	GT/PT	GYP. BD.	GT/PT	1A 4'-8" GT MANGROTT		
131	STAFF TOILET		GT	GT	GYP. BD.	GT/PT	GYP. BD.	GT/PT	GYP. BD.	GT/PT	1A 4'-8" GT MANGROTT		
132	STORAGE		VG	VB	GYP. BD.	PT	G. BLK	PT	G. BLK	PT	GYP. BD.	PT	
133	LOBBY		CPT-1	VB	EXIST	PT	EXIST	PT	EXIST	PT	EXIST	PT	
134	LOBBY		CPT-1	VB	EXIST	PT	EXIST	PT	EXIST	PT	EXIST	PT	
135	RAMP		CPT-1	VB	EXIST	PT	EXIST	PT	EXIST	PT	EXIST	PT	
136	GRG		LINO-4	VB	EXIST	PT	EXIST	PT	EXIST	PT	G.BLK	PT	
137	TESTING/REFERENCE		EXIST	EXIST	EXIST	EXIST	EXIST	EXIST	EXIST	EXIST	EXIST	EXIST	

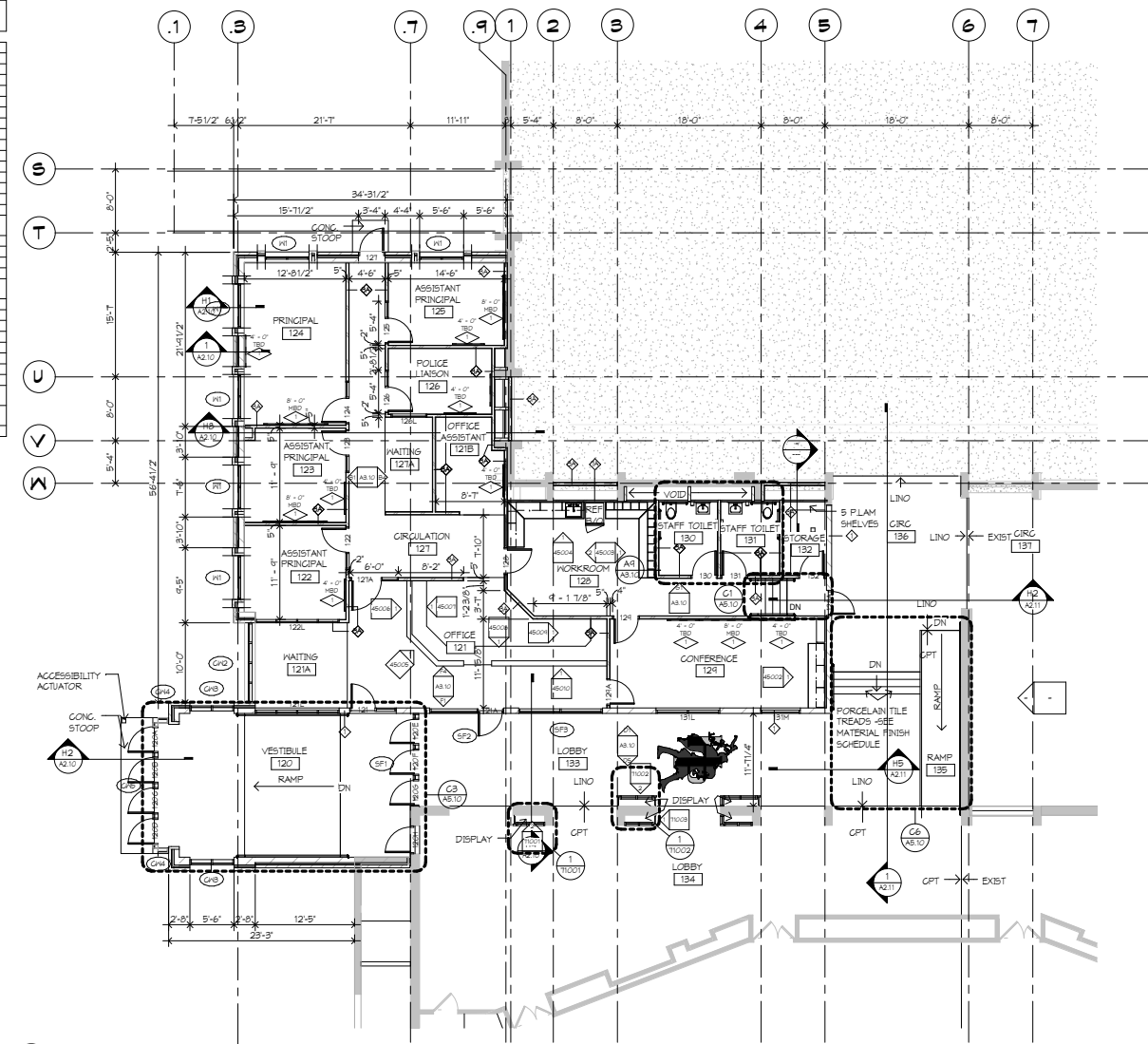
DOOR / OPENING SCHEDULE														
DOOR	NO.	TYPE	QTY	WIDTH	HEIGHT	MATERIAL	LAB.	FRAME	DEPTH	MATERIAL	GL.	MOUNTING CONDITIONS		REMARKS
												HEAD	JAMB	
100	F	2	3	2	T	0	HK	PR	X	HK				
101	F	1	3	2	T	0	HD	PR	X	HK				
104	F	1	3	2	T	0	HD	PR	X	HK				
104A	F	1	3	2	T	0	HD	PR	X	HK				
104B	F	1	3	2	T	0	HD	PR	X	HK				
106	AL	1	3	2	T	0	AL	GH	X	AL				
106C	AL	1	3	2	T	0	AL	GH	X	AL				
106D	AL	1	3	2	T	0	AL	GH	X	AL				
106E	AL	1	3	2	T	0	AL	GH	X	AL				
106F	AL	1	3	2	T	0	AL	GH	X	AL				
106G	AL	1	3	2	T	0	AL	GH	X	AL				
106H	AL	1	3	2	T	0	AL	GH	X	AL				
106I	AL	1	3	2	T	0	AL	GH	X	AL				
106J	AL	1	3	2	T	0	AL	GH	X	AL				
106K	AL	1	3	2	T	0	AL	GH	X	AL				
106L	AL	1	3	2	T	0	AL	GH	X	AL				
106M	AL	1	3	2	T	0	AL	GH	X	AL				
106N	AL	1	3	2	T	0	AL	GH	X	AL				
106O	AL	1	3	2	T	0	AL	GH	X	AL				
106P	AL	1	3	2	T	0	AL	GH	X	AL				
106Q	AL	1	3	2	T	0	AL	GH	X	AL				
106R	AL	1	3	2	T	0	AL	GH	X	AL				
106S	AL	1	3	2	T	0	AL	GH	X	AL				
106T	AL	1	3	2	T	0	AL	GH	X	AL				
106U	AL	1	3	2	T	0	AL	GH	X	AL				
106V	AL	1	3	2	T	0	AL	GH	X	AL				
106W	AL	1	3	2	T	0	AL	GH	X	AL				
106X	AL	1	3	2	T	0	AL	GH	X	AL				
106Y	AL	1	3	2	T	0	AL	GH	X	AL				
106Z	AL	1	3	2	T	0	AL	GH	X	AL				
107	F	1	3	2	T	0	HD	PR	X	HK				
107A	F	1	3	2	T	0	HD	PR	X	HK				
107B	F	1	3	2	T	0	HD	PR	X	HK				
107C	F	1	3	2	T	0	HD	PR	X	HK				
107D	F	1	3	2	T	0	HD	PR	X	HK				
107E	F	1	3	2	T	0	HD	PR	X	HK				
107F	F	1	3	2	T	0	HD	PR	X	HK				
107G	F	1	3	2	T	0	HD	PR	X	HK				
107H	F	1	3	2	T	0	HD	PR	X	HK				
107I	F	1	3	2	T	0	HD	PR	X	HK				
107J	F	1	3	2	T	0	HD	PR	X	HK				
107K	F	1	3	2	T	0	HD	PR	X	HK				
107L	F	1	3	2	T	0	HD	PR	X	HK				
107M	F	1	3	2	T	0	HD	PR	X	HK				
107N	F	1	3	2	T	0	HD	PR	X	HK				
107O	F	1	3	2	T	0	HD	PR	X	HK				
107P	F	1	3	2	T	0	HD	PR	X	HK				
107Q	F	1	3	2	T	0	HD	PR	X	HK				
107R	F	1	3	2	T	0	HD	PR	X	HK				
107S	F	1	3	2	T	0	HD	PR	X	HK				
107T	F	1	3	2	T	0	HD	PR	X	HK				
107U	F	1	3	2	T	0	HD	PR	X	HK				
107V	F	1	3	2	T	0	HD	PR	X	HK				
107W	F	1	3	2	T	0	HD	PR	X	HK				
107X	F	1	3	2	T	0	HD	PR	X	HK				
107Y	F	1	3	2	T	0	HD	PR	X	HK				
107Z	F	1	3	2	T	0	HD	PR	X	HK				

S

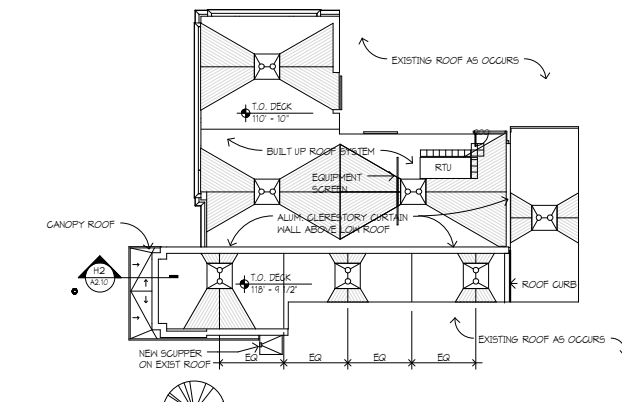


E1 H.S. SECOND FL  
1/8" = 1'-0"

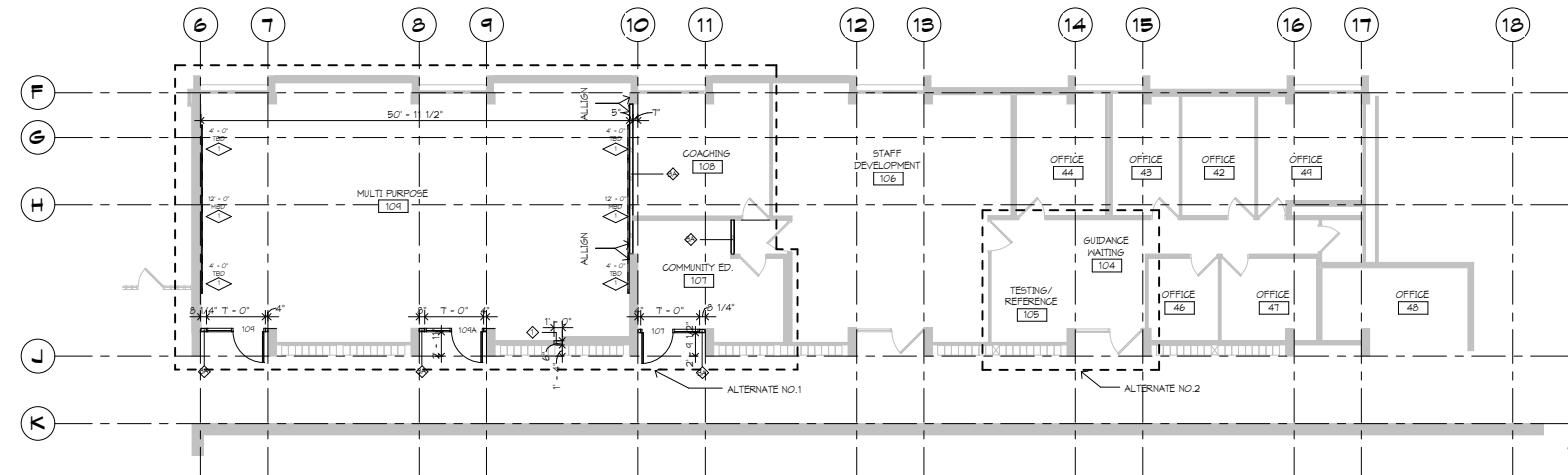
E6 AUDITORIUM MAIN LEVEL  
1/8" = 1'-0"



A



H1 ROOF PLAN @ ADDITION  
1/16" = 1'-0"



H4 H.S. FIRST FL (REMODEL SPACE)  
1/8" = 1'-0"

FLOOR PLAN GENERAL NOTES:

- REFER TO DETAILS OF CONSTRUCTION FOR:
- ABBREVIATIONS, MATERIAL SYMBOLS
- MOUNTING HEIGHTS
- LINTEL SCHEDULE
- MATERIAL FINISH/COLOR SCHEDULE
- WALL TYPES
- MARKER BOARD TYPES AND MOUNTING HEIGHTS
- THE ABOVE SECTIONS ARE LISTED FOR REFERENCE ONLY, AND ARE NOT EXCLUSIVE TO AREAS OF WORK. ALL DETAILS SHALL BE REVIEWED FOR SCOPE OF WORK.
- ALL PLAN DIMENSIONS ARE NOMINAL TO FACE OF WALL. WALL THICKNESSES ARE SHOWN NOMINAL. SEE WALL TYPES FOR ACTUAL THICKNESS.
- ALL GYP. WALLS ARE TO BE 5 INCHES THICK UNLESS OTHERWISE NOTED.
- ALL CONCRETE BLOCK WALLS ARE TO BE 8 INCHES THICK UNLESS OTHERWISE NOTED.
- COORDINATE SIZE AND LOCATION OF ALL DUCT AND SHAFT OPENINGS IN WALLS AND FLOORS IN HEIGHT AND ELEV. PROVIDE ALL REQUIRED LINTELS FOR OPENINGS. SEE LINTEL SCHEDULE.
- FIELD VERIFY ALL MILLWORK OPENINGS.
- SET FLOOR DRAINS 3/4" BELOW FINISHED CONCRETE FLOORS UNLESS NOTED OTHERWISE. PROVIDE CONSISTENT SLOPE FROM WALL TO DRAIN BY SLOPING CONCRETE, MIN. 1/4" PER FOOT.
- VERIFY LOCATION, SIZE AND QUANTITY OF ALL MECHANICAL AND ELECTRICAL EQUIPMENT PADS.
- ALL DOOR/SIDELITE OPENINGS TO BE 4" FROM ADJACENT WALL UNLESS OTHERWISE NOTED.
- ALL GYP. WALLS ARE CENTERED ON GRID UNLESS NOTED OTHERWISE.
- FIRE RATED WALLS ARE INDICATED ON CODE PLANS.
- HEAVY LINES THIS
- INDICATES BUILDING MATCH LINE

HIGHLAND PARK  
SENIOR HIGH  
SCHOOL - NEW MAIN  
ENTRY  
1015 S. SNELLING AVE.  
ST. PAUL, MINNESOTA 55116

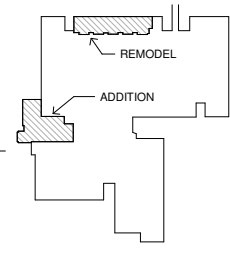
SAINT PAUL PUBLIC  
SCHOOLS - ISD #625  
360 COLBORNE STREET  
ST. PAUL, MINNESOTA 55102



ARCHITECTS AND ENGINEERS  
MINNESOTA OFFICE  
305 ST. PETER ST.  
ST. PAUL, MINNESOTA 55102  
FAX: 651.234.5646 TEL: 651.227.7773



Saint Paul  
PUBLIC SCHOOLS



KEY PLAN

Handy clarify that this plan, specification or report was prepared by me or under my direct supervision and that I am a duly registered ARCHITECT under the laws of the State of Reg. State

Arch Name		Date Reg. Exp.	
Registration Number	Arch. Num.	Date	No.

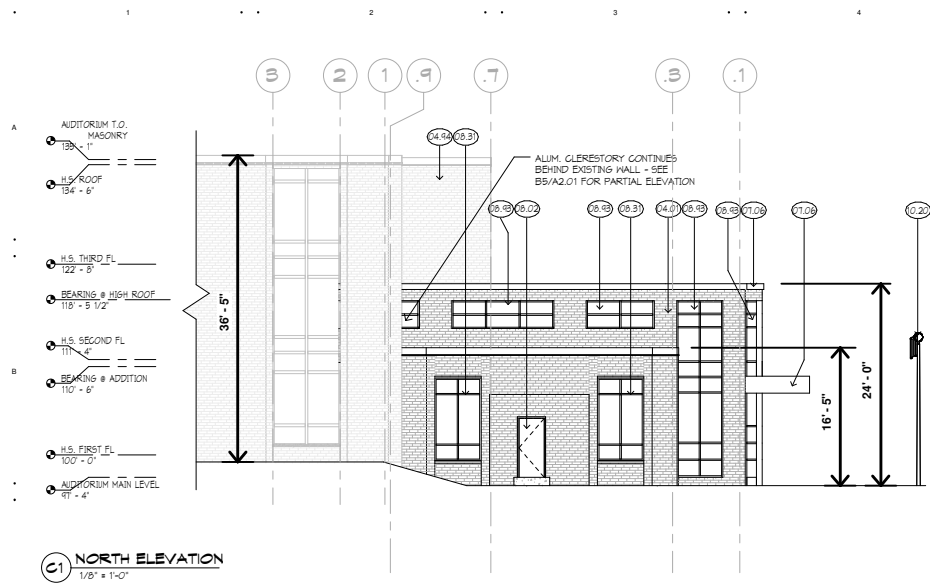
Comm: 07/18  
Date: 05/13/08  
Drawn: Author  
Check: Checker

FLOOR PLANS,  
ROOF PLAN,  
DOOR  
SCHEDULE &  
ROOM FINISH  
SCHEDULE

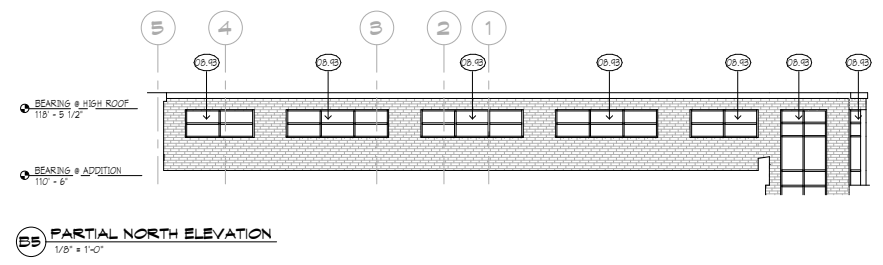
A1.10

NOT FOR CONSTRUCTION  
CD ESTIMATE SET

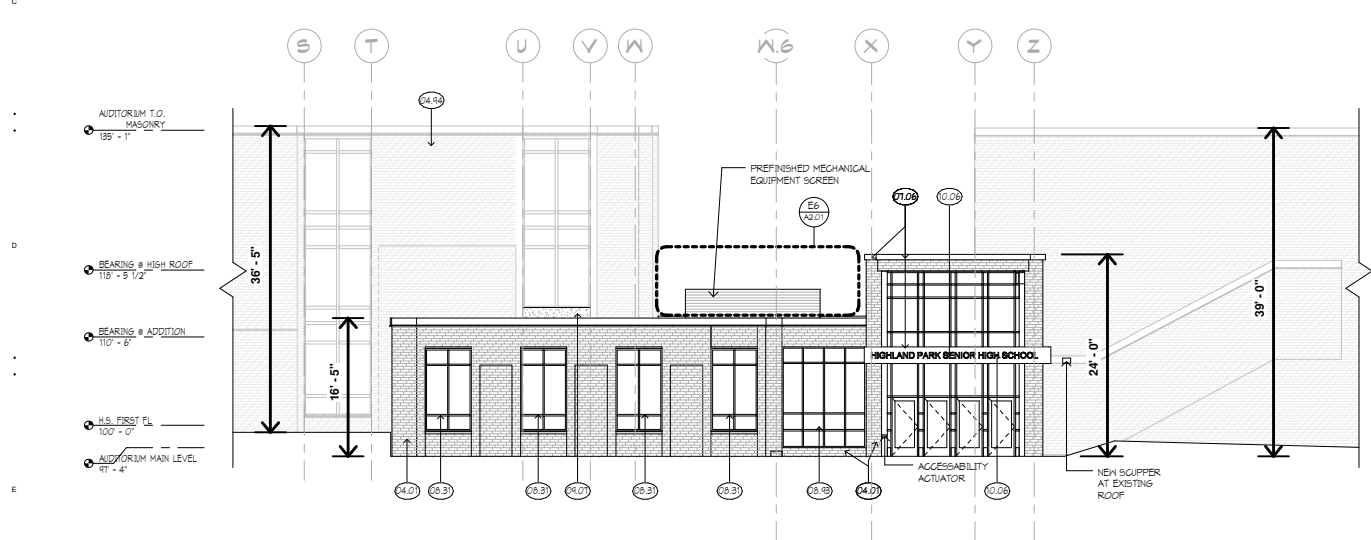
S



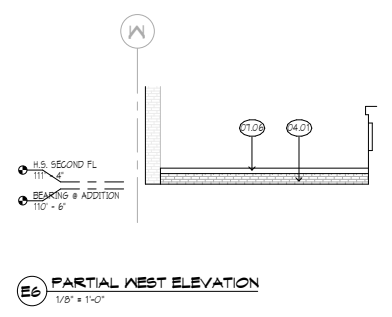
**(C1) NORTH ELEVATION**  
1/8" = 1'-0"



**(B5) PARTIAL NORTH ELEVATION**  
1/8" = 1'-0"

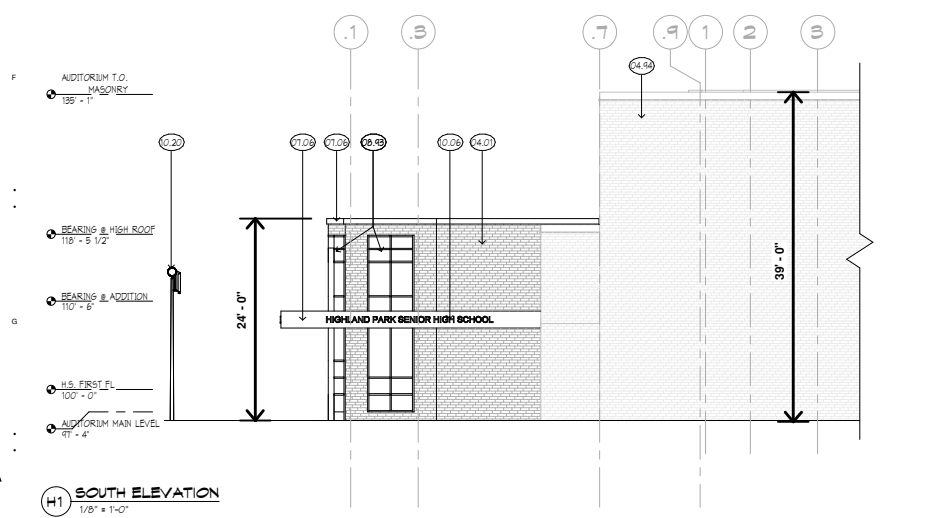


**(E1) WEST ELEVATION**  
1/8" = 1'-0"

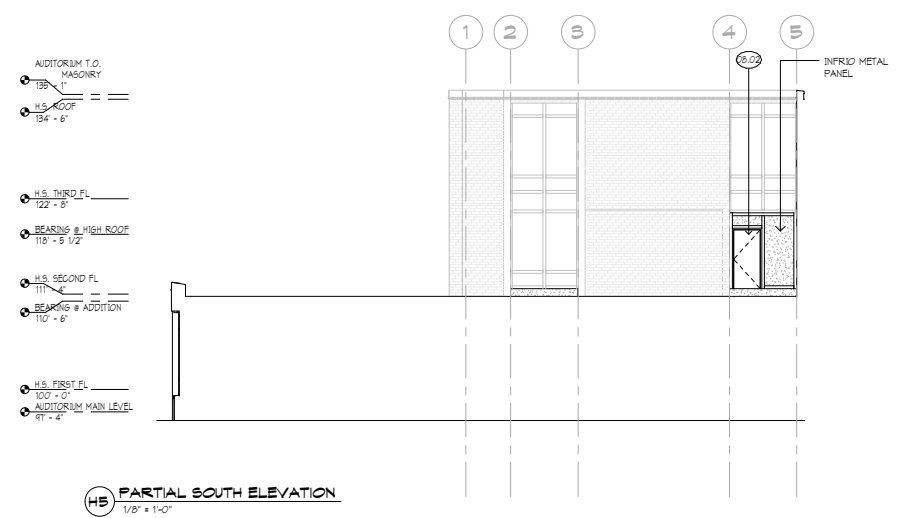


**(E6) PARTIAL WEST ELEVATION**  
1/8" = 1'-0"

A



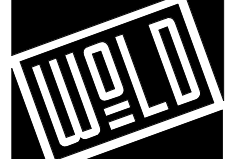
**(H1) SOUTH ELEVATION**  
1/8" = 1'-0"



**(H5) PARTIAL SOUTH ELEVATION**  
1/8" = 1'-0"

**HIGHLAND PARK SENIOR HIGH SCHOOL - NEW MAIN ENTRY**  
1015 S. SNELLING AVE.  
ST. PAUL, MINNESOTA 55116

**SAINT PAUL PUBLIC SCHOOLS - ISD #625**  
360 COLBORNE STREET  
ST. PAUL, MINNESOTA 55102



ARCHITECTS AND ENGINEERS  
MINNESOTA OFFICE  
305 ST. PETER ST.  
ST. PAUL, MINNESOTA 55102  
FAX: 651.234.5646 TEL: 651.227.7773  
MINNESOTA COLORADO MICHIGAN ILLINOIS



**Saint Paul PUBLIC SCHOOLS**

MATERIALS KEY	
KEY	MATERIAL
04.01	BRICK 1
04.04	EXISTING BRICK
07.06	PREFINISHED METAL PANEL OR COPING
08.02	HOLLOW METAL DOOR
08.01	ALUMINUM WERDOCH
08.03	ALUMINUM CURTAINWALL
04.07	GYPSUM BOARD
10.06	ALUMINUM SIGNAGE
10.20	FLANGIBLE

I hereby certify that this plan, specification or report was prepared by me or under my direct supervision and that I am a duly registered ARCHITECT under the laws of the State of Reg. State

Revisions	Date	No.

Comm	Date	Author	Checker
07/21/08	08/13/08		

**EXTERIOR ELEVATIONS**

Scale: As indicated

**A2.01**

**NOT FOR CONSTRUCTION CD ESTIMATE SET**